

The image shows an outdoor terrace area of a hotel. In the foreground, there are several round black metal tables with matching chairs. Each table is set with a large, colorful bouquet of flowers and a small lit candle in a glass holder. The terrace is paved with light-colored stone tiles. In the background, there is a building with large windows and brickwork. A large, leafy tree is positioned in the center of the terrace, and various other plants and flowers are scattered throughout the area. The lighting is soft, suggesting dusk or dawn.

STARHOTELS®
PREMIUM

Business Palace
MILANO

Business Palace

MILANO

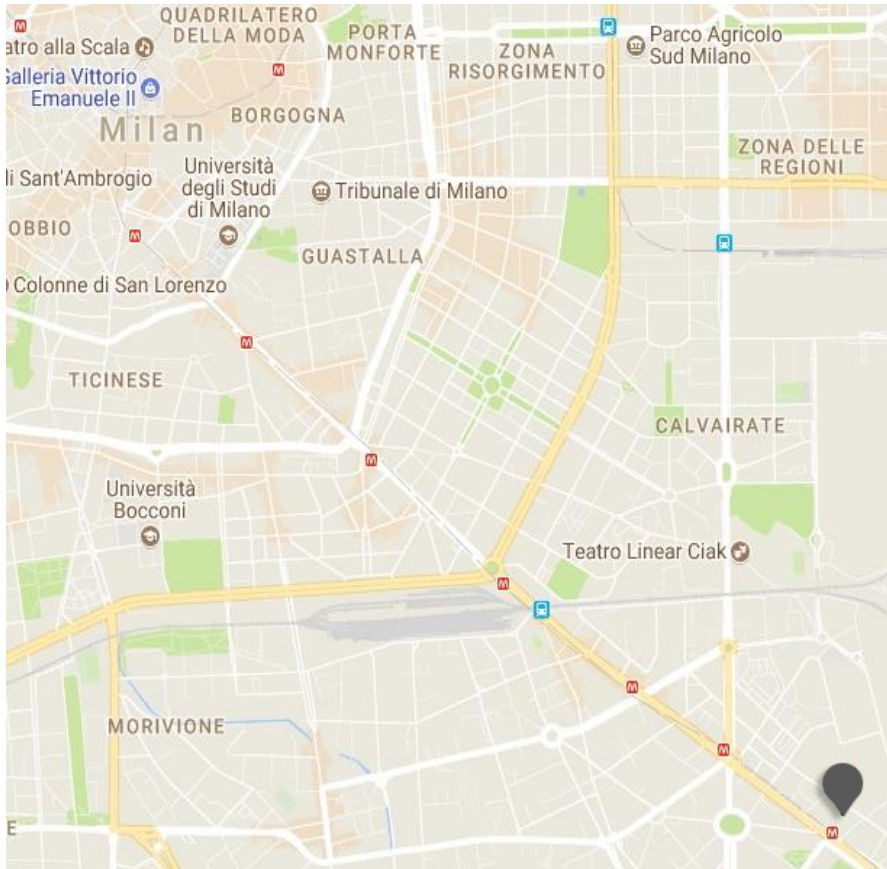


From industrial icon to modern-day hospitality

A repurposed industrial building dating back to the 1900s, the Starhotels Business Palace is strategically located in the east of Milan, only a few subway stops from the historic centre near the Linate airport, the Rogoredo railway station and the motorway, making it the favourite choice for business travellers who don't want to renounce to comfort and pleasure. Its 255 spacious rooms and suites provide a chic, evocative metropolitan setting, designed to create an oasis of relaxation after a busy day in the city.

Business Palace

MILANO



Location

Strategically located in the east of Milan, a few subway stops from the historic centre, near the Linate airport, the Rogoredo railway station and the motorway

Distances

Milano Centrale railway station: Km 10 (15 min. by Underground)

Rogoredo railway station: Km 0,8

P.zza Duomo: (10 min. by Underground)

Highway: Km 0,5

Underground: MM3 Porto di Mare

Airport:

Linate Km 7,2 - Malpensa Km 45

Fairgrounds:

Milano (City) Km 8 - Milano (Rho) Km 20

Via Gaggia, 3 - 20139 Milano - ITALY

T +39 02 535451 F +39 02 57307550

business.mi@starhotels.it

starhotels.com

Business Palace

MILANO

Restaurant & Bar

Il Borromeo restaurant offers superb Mediterranean and international dishes, with a selection of the finest ingredients.

The intimate, cosmopolitan La Corte bar, open from early morning to late night, is the ideal venue for a good coffee, a quick lunch or a cocktail, to be enjoyed in the lovely dehors during the summer.



Business Palace

MILANO



255 Rooms

48 Classic
118 Superior
50 Executive
6 Junior Suite
33 Suite

The 255 rooms are all with chic, metropolitan interiors and furnished in the distinctive contemporary style that has made Milan famous all over the world.



Business Palace

MILANO



Meetings & Events

Meeting rooms: 10

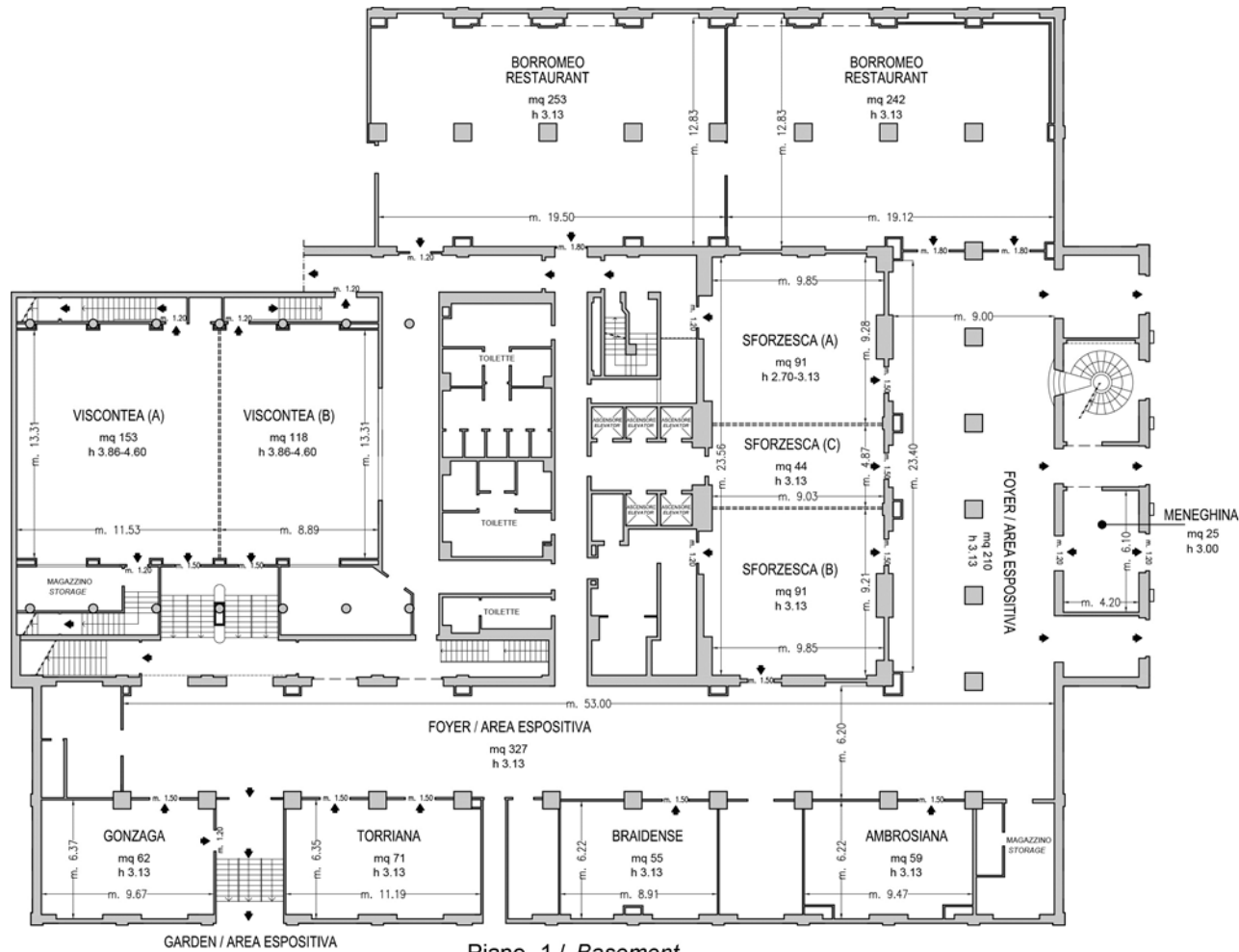
Capacity (theatre style): 340 max

The hotel offers 10 versatile meeting rooms equipped with latest-generation technology that can host up to 340 people, as well as open-air exhibition spaces and showrooms, plus the support of a team of expert professionals.



Business Palace

MILANO



➤ Uscite di sicurezza / Emergency Exits

--- Finestre / Windows

===== Paredi mobili / Modular Walls

■ Colonne / Columns

Business Palace

MILANO

Meeting rooms	Area mq / ft	L x W mt. / ft.	Height mt. / ft.	Theatre	Class room	Conference table/ U-shape	Cabaret style^	Cocktail reception	Banquet
Viscontea (A)	153 1646,28	13,31x11,53 43,67x37,83	3,86-4,60 12,66-15,09	150	100	38	100	120	-
Viscontea (B)	118 1269,68	13,31x8,89 43,67x29,17	3,86-4,60 12,66-15,09	100	100	35	80	80	-
Viscontea (A+B)	273 2937,48	20,49x13,31 67,22x43,67	3,86-4,60 12,66-15,09	340	160	55	170	200	160
Sforzesca (A)	91 979,16	9,85x9,28 32,32x30,45	2,7-3,13 8,86-10,27	80	42	27	60	60	-
Sforzesca (B)	91 979,16	9,85x9,21 32,32x30,22	3,13 10,27	80	42	27	60	60	-
Sforzesca (C)	44 473,44	9,03x4,87 29,63x15,98	3,13 10,27	34	24	12	12	20	-
Sforzesca (A+C)	135 1453,2	9,85x14,18 32,32x46,52	3,13 10,27	110	65	35	42	90	-
Sforzesca (B+C)	135 1453,2	9,85x14,18 32,32x46,52	3,13 10,27	110	65	35	42	90	-
Sforzesca (A+B+C)	232 2496,32	9,85x23,56 32,32x77,30	3,13 10,27	220	120	40	140	160	120
Tarriana	71 763,96	6,35x11,19 20,83x36,71	3,13 10,27	70	35	25	40	40	16
Gonzaga	62 667,12	6,37x9,67 20,90x31,73	3,13 10,27	55	30	25	30	40	16
Ambrosiana	59 634,84	6,22x9,47 20,41x31,07	3,13 10,27	45	30	22	30	20	8
Braidense	55 591,8	6,22x8,91 20,41x29,23	3,13 10,27	45	30	20	30	20	8
Meneghina	26 279,9	4,20x6,16 13,64x20,20	3 9,64	10	-	14	-	-	-
Studios ^o	20-25 215,20-269	5,38x3,70 17,65x12,14	2,70 8,86	20	-	-	-	-	-
Foyer sforzesco	207 2228,13	9x23 29,53x75,46	3,13 10,27	-	-	-	-	160	-
Foyer visconteo	264 2841,67	6x44 19,69x144,36	3,13 10,27	-	-	-	-	300	-
Garden	415 4467	36,4x11,4 119,4x37,4	-	-	-	-	-	-	-
Tensostruttura	70 753,48	12,4x5,7 40,6x18,7	-	-	-	-	-	-	-
Il Borromeo Restaurant	495 5328,14	12,83x38,26 42x125,5	3,13 10,27	-	-	-	-	340	300
Lobby bar	180 1937,5	12,63x14,30 41,44x46,9	3,13 10,27	-	-	-	-	120	80

^o Luce naturale/ Daylight

^ Class room: tavoli da 3 persone, tables up to 3 pax each ^ Conference table/U-table: tavoli da 3 persone, tables up to 3 pax each ^ Cabaret style: tavoli da 7 persone, tables up to 7 pax each